

[Across]

1. Last stage of insect development.
3. The only group of insects known as true bugs.
6. The natural world around you.
11. The hard structure found in mammals that give them their shape.
13. When insects outgrow shed their old cytoskeleton and underneath a new one will form and harden.
14. A series of physical changes that occur as an organism grows older and gets bigger.
15. The process of metamorphosis that includes egg, instar/larva, and adult stages of insect development
17. A young version of bug that looks very similar to its adult form.
18. A mouth part found in true bugs that is used for feeding.
19. The set of changes that occur as an insect grows into an adult.

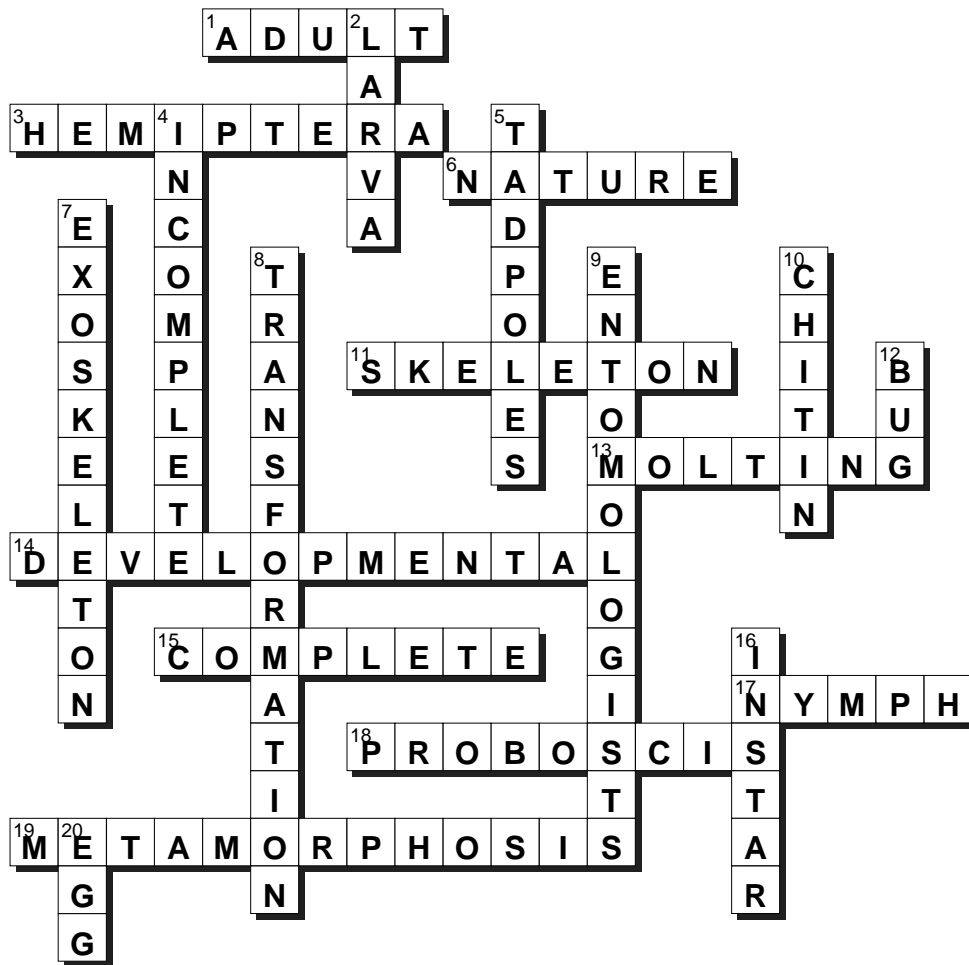
[Down]

2. A developmental stage within metamorphosis that begins after the insect hatches from an egg.
4. Type of metamorphosis where a bug hatches from an egg as a nymph and continues to grow larger until it reaches the adult stage.
5. A young frog.
7. A hard covering on the outside of bugs that provides protection.
8. To change from one shape to another.
9. Scientists who study insects.
10. A substance that is used to make the exoskeleton of bugs.
12. A common word for insect.
16. Select larval stages in metamorphosis that represent different levels of development.
20. The time point of development where every insect begins.

Try our crossword puzzle based on one of our Web articles. You can learn more about this topic when you read the article *Metamorphosis, Nature's Ultimate Transformer* Web address below.

(<http://askabiologist.asu.edu/explore/metamorphosis>)





[Across]

SOLUTION

[Down]

- 1. ADULT
- 3. HEMIPTERA
- 6. NATURE
- 11. SKELETON
- 13. MOLTING
- 14. DEVELOPMENTAL
- 15. COMPLETE
- 17. NYMPH
- 18. PROBOSCIS
- 19. METAMORPHOSIS



- 2. LARVA
- 4. INCOMPLETE
- 5. TADPOLES
- 7. EXOSKELETON
- 8. TRANSFORMATION
- 9. ENTOMOLOGISTS
- 10. CHITIN
- 12. BUG
- 16. INSTAR
- 20. EGG

This solution above will let you see how well you did with the puzzle. Try some of the other puzzles at the *Ask A Biologist* website listed below.